

Introduction

Tool Menus

Thesaurus Creation and Deletion

Thesaurus Visualization

Thesaurus Edition

Metadata Edition

Import / Export

Tools

Why to use metadata?



navegación

- [Página principal](#)
- [Cambios recientes](#)
- [Página aleatoria](#)
- [Ayuda](#)

buscar

herramientas

- [Lo que enlaza aquí](#)
- [Cambios relacionados](#)
- [Páginas especiales](#)
- [Versión para imprimir](#)
- [Enlace permanente](#)
- [Información de la página](#)

[página](#) [discusión](#) [ver código](#) [historial](#)

ThManager Introduction

Introduction

ThManager is a thesaurus editor tool that facilitates the creation and management of thesauri using the SKOS format.

In order to install the application, auto-executable files (.exe for windows and .jar for Linux/Unix) ought to be stored at the hard disk. Then, it will start the set-up automatically and the user should follow the assistant advices.

* Record Selector						
Tabular						
Standard	Unique Id	Language	Title	Hierarchy Level...	Subject	
DC: Thesaurus	AGROVOC	English	AGROVOC	TEXT.REFEREN...	POLITICS, LAW A...	Food
DC: Thesaurus	DCType	English	[SYSTEM CONTROLLED LIST, DO NOT DELETE]. Types of r...	TEXT.REFEREN...	INFORMATION A...	Adva
DC: Thesaurus	DataLangCode	English	[SYSTEM CONTROLLED LIST, DO NOT DELETE]. Data langu...	TEXT.REFEREN...	CULTURE.LINGUI...	Adva
DC: Thesaurus	EuropeanTerrit...	English	Thesaurus of territorial units of Spain and France	TEXT.REFEREN...	COUNTRIES AND ...	Univ
DC: Thesaurus	GEMET	English	General Multilingual Environmental Thesaurus	TEXT.REFEREN...	SCIENCE.NATUR...	EuroJ
DC: Thesaurus	ISO639	English	Codes for the representation of names of languages	TEXT.REFEREN...	CULTURE.LINGUI...	Inter
DC: Thesaurus	MD_Restriction...	English	[SYSTEM CONTROLLED LIST, DO NOT DELETE]. Metadata r...	TEXT.REFEREN...	POLITICS, LAW A...	Inter
DC: Thesaurus	MdLangCode	English	[SYSTEM CONTROLLED LIST, DO NOT DELETE]. Metadata l...	TEXT.REFEREN...	CULTURE.LINGUI...	Adva
DC: Thesaurus	THES_NOTATI...	English	[SYSTEM CONTROLLED LIST, DO NOT DELETE]. Values of h...	TEXT.REFEREN...		Adva
DC: Thesaurus	THES_REL_LAN...	English	[SYSTEM CONTROLLED LIST, DO NOT DELETE]. SKOS Relat...	TEXT.REFEREN...		Adva
DC: Thesaurus	THES_REL_TYPE	English	[SYSTEM CONTROLLED LIST, DO NOT DELETE]. SKOS Relat...	TEXT.REFEREN...		Adva
DC: Thesaurus	UNESCO	English	UNESCO thesaurus	TEXT.REFEREN...	EDUCATION	UNES

Main window (window "Record selector")

When the tool starts, it automatically shows the window that lets you select the available thesaurus records in the thesaurus repository and upon which different operations can be made (see previous figure).

The characteristics of this record selector are:

- It allows a multiple or simple record selection. Multiple selections are done in the common way in Windows CTRL + mouse press to select one by one, and CAPS + mouse press to select a group of rows. Multiple selections allow to delete several thesauri. The first one selected will be manipulated in the other tool windows.
- It allows to order alphabetically the elements contained by any column. The user should place the mouse on the column and double-click on it.
- It allows to filter visible thesaurus records by making a restriction of the value of one or several columns. The value that imposes the restriction is that one that is introduced below the title of each column (by using selection lists or text boxes).
- It allows to search in thesaurus description records using the search component at the bottom of record selector window.

The section Tool menus describes the tool menu options through which you can make different operations on the selected thesaurus record. In any case and to summarize, the following operations can be made on the selected thesaurus record:

- To visualize or edit a subset of SKOS relations and properties to create or modify thesauri.
- To create, delete and duplicate metadata records by accessing the menu Edit (or toolkit bar icons), see section [Menu Edit](#).
- To visualize or edit all metadata of each record. If you select an entry in the record selection window and then you open the Dublin core metadata edition window (File menu options), all metadata corresponding to the selected thesaurus record will be displayed as it is shown in section Metadata Edition. Displayed record identifier will be shown in the metadata edition window title bar. If there are several records selected in the record selection window, for it can only display one, it will show the first selected.
- Import and export of thesaurus records. Through Import and Export options of menu File it is possible to import and export thesaurus in accordance with SKOS standard. For more details, see section [Export](#).

ThManager Tool menus

Tool Menus

Contenido [ocultar]

- 1 Tool Menu
 - 1.1 Menu File
 - 1.2 Menu Edit
 - 1.3 Menu Window
 - 1.4 Menu Help







Tool menus are explained in the following sections and are as follows:

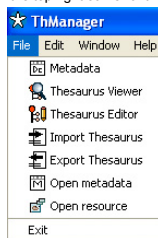
- Menu File
- Menu Edit
- Menu Window
- Menu Help

You can also access all the menu options through the toolbar. Toolbar icons are the same as in the menu options, doing the same task. All the options functionality is explained along the following points in this section.

Menu File

Menu File has the following options:

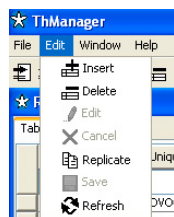
-  Metadata: It allows you visualize and modify all metadata elements of the thesaurus record using an interface in accordance with Dublin Core application profile for Thesauri. For more details, see section [Metadata Edition](#).
-  Thesaurus Viewer: It opens the thesaurus view window to visualize the selected thesaurus record, providing a search system to surf it deeply. For more details, see section [Thesaurus Visualization](#).
-  Thesaurus Editor: It allows you edit a subset of SKOS relations and properties of the selected thesaurus record. For more details, see section [Thesaurus_Edition](#).
-  Import Thesaurus: It allows you import thesaurus records fitting SKOS standard. It can be made from two different ways; it can be made directly from the SKOS file, or with a metadata describing the thesaurus. For more details, see section [Import](#).
-  Export Thesaurus: It allows you export the selected thesaurus record fitting SKOS standard, and his metadata in Dublin Core. For more details, see section [Export](#).
-  Exit: It allows you exit the tool. You also can finish by pressing the common exit button on the top right corner of the window.



Menu File








Menu Edit

This menu allows you make all common edit operations on the record selection window or on the metadata edition sub-window. Apart from edit, save, cancel and refresh operations, it also adds operations to treat rows in windows that contain multi-valued table-represented elements. These tables appear both in the record selection window and in the metadata edition window that contain several occurrences of an element.


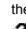

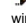




Menu Edit

Toolkit bar and menu which you can see in previous figure have the options detailed below.

-  Insert: Adds an empty row to the active table. The active table is the one that is visible in the selected window and, if there are two tables in that window, the last one upon which you have pressed. If no table is selected as active table, this option has no effect.
-  Delete: Deletes the selected row in the active table, removing all its information. If no row is selected, this option has no effect.
-  Edit: Enables to make changes in the metadata edition window.
-  Cancel: Cancels the metadata edition, leaving data as they were before ALL changes.
-  Replicate: Creates an identical copy of the metadata associated to the selected thesaurus in the record selector window, so the copy will refer to the same thesaurus.
-  Save: If the selected window was in editing mode, it saves all the changes made.
-  Refresh: Reloads the information shown in the selected window. Very useful after importing thesaurus or to recover all records in the repository after executing a search which returns fewer records than the repository has.


These options are enabled depending on the selected window state. Cases in which each option is enabled or disabled are as follows:

-  Insert and  delete: If an auto-save window is selected, these options are always enabled. Otherwise, they are only enabled in editing mode. In those windows in which information can not be changed, they are not enabled.
-  Refresh: This option is enabled only if you are not editing and only if the selected window has information that can be refreshed.
-  Edit: It is only enabled in windows that can change to edition mode and when they are not in that mode. It locks the window so you can not close the window or selects another one. It is not enabled in windows which are always in editing mode.
-  Save: It is only enabled in windows that are in editing mode. It saves the changes made and changes to visualization mode. There are some exceptions where the button is provided in the active window instead of the menu and bar.
-  Cancel: It is only enabled in windows that are in editing mode, and allow undo option. It undoes the changes made, reloads the original information since last save time, and changes to visualization mode.

Menu Window

It shows all the windows that are opened in the tool, and allows you place the one you want on the foreground.

3



navegación

- [Página principal](#)
- [Cambios recientes](#)
- [Página aleatoria](#)
- [Ayuda](#)

buscar

herramientas

- [Lo que enlaza aquí](#)
- [Cambios relacionados](#)
- [Páginas especiales](#)
- [Versión para imprimir](#)
- [Enlace permanente](#)
- [Información de la página](#)



Menu Window

Menu Help

This menu contains the following options:

- User manual: This option shows this user manual, integrated in the tool.
- About: It shows information about the version and author of this tool.



Menu Help



navegación

- [Página principal](#)
- [Cambios recientes](#)
- [Página aleatoria](#)
- [Ayuda](#)



buscar

herramientas

- [Lo que enlaza aquí](#)
- [Cambios relacionados](#)
- [Páginas especiales](#)
- [Versión para imprimir](#)
- [Enlace permanente](#)
- [Información de la página](#)

ThManager Thesaurus Creation and Deletion

Thesaurus Creation and Deletion

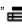
There are two different ways to create new thesauri: The first one and the more common is to create it by inserting a new one record in the "Record Selector" window (see this [figure](#)), adding a row by using the Menu Edit options: Insert , o Replicate .

Insert new record

Replicate record

- Replicating means to create a new metadata description from another metadata which refers to a thesaurus, so by replicating, you can obtain several metadata describing in different ways or different languages the same thesaurus.

The second one is made by importing thesauri, for more details see section [Import](#).

Is possible to delete a thesaurus using the contextual menu delete (right click over a record), o pressing "delete button" , both open window in the next figure, that allows choose between deleting only the metadata, or deleting both, the metadata and its data (the thesaurus).

Delete record

navegación

- [Página principal](#)
- [Cambios recientes](#)
- [Página aleatoria](#)
- [Ayuda](#)

buscar

Buscar en IAAA/GSL

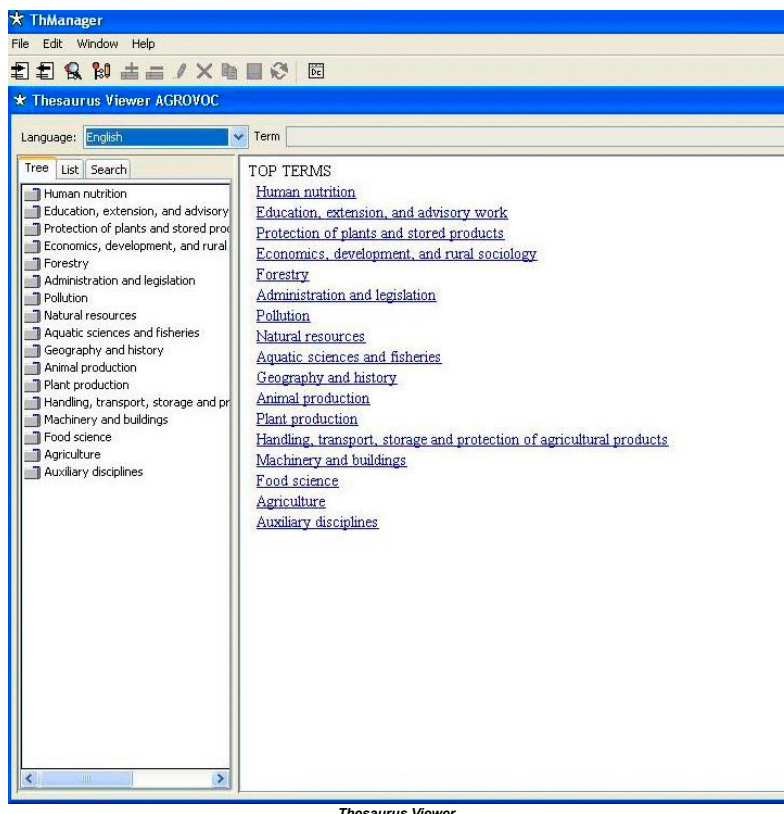
herramientas

- [Lo que enlaza aquí](#)
- [Cambios relacionados](#)
- [Páginas especiales](#)
- [Versión para imprimir](#)
- [Enlace permanente](#)
- [Información de la página](#)

ThManager Thesaurus Visualization

Thesaurus Visualization

When you select the option "Thesaurus Viewer" in Menu File , or make double-click on any thesaurus record, the thesaurus viewer will open using the interface shown in the following figure.



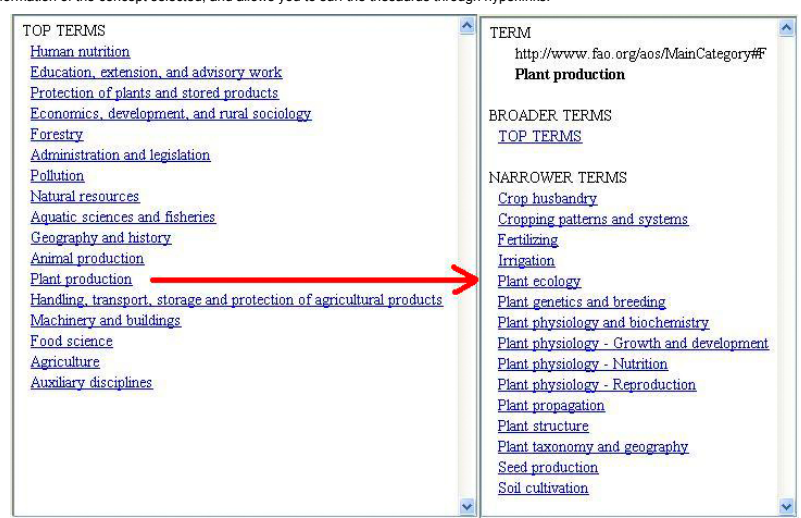
Thesaurus Viewer

Using the combo provided, you can change the visualization language of the thesaurus, updating automatically the language of concept information in every panel and holding the last selected concept. The language of labels indicating relations and properties do not switch because they depends on the application language.



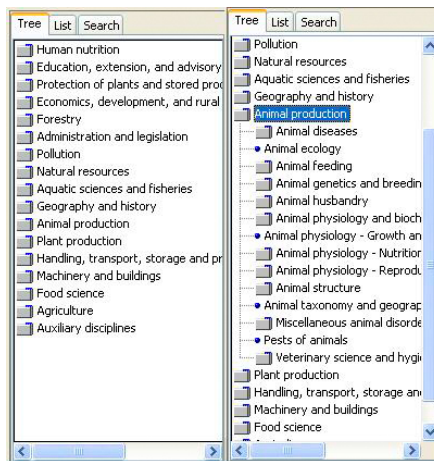
Combo for switching languages

The main view shows completely the information of the concept selected, and allows you to surf the thesaurus through hyperlinks.



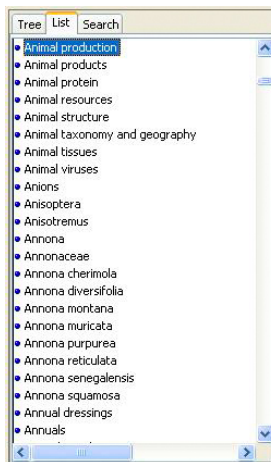
Hyperlink navigation

Furthermore, you can choose between three tabs: **Tree tab**: This view shows hierarchically the selected thesaurus. Firstly it shows the top concepts, allowing an overview over the different thematic branches of the thesaurus. Making double click on concepts with narrows, the tree expands a new level of concepts. On the other hand, if you make double-click over an expanded concept, it will contract that concept. A simple click produces a selected concept. Switching the language it will order every level with the appropriate language rules.



Tree view

List tab: This view shows plainly the selected thesaurus, showing an alphabetically ordered list of all thesaurus concepts. Switching the language it will order the list with the appropriate language rules.



Alphabetical list view

Search tab: The last one tab allows you to search in the preferred labels by "exact match" search, "start with" search and "contains" search. The "exact match" search allows you to find concepts with preferred labels exactly equal to the text written in the text field, the "start with" search allows you to find the concepts whose preferred label starts by the text introduced, and finally the "contains" search finds every concept containing the text as a substring of their preferred label. You can realize that they are ordered by the number of results they show. Results are shown in an ordered alphabetic list which behaves exactly equal to the mentioned above.



Search view

Moving the mouse over a concept, all of them show the complete path from the concept pointed to the corresponding top concept. Is an interesting option when you are not using a hierarchical view.

Animal production.Animal diseases.Organic diseases.Nervous system diseases.Encephalopathy |

Tool tip path

navegación

- [Página principal](#)
- [Cambios recientes](#)
- [Página aleatoria](#)
- [Ayuda](#)

buscar

Buscar en IAAA/GSL

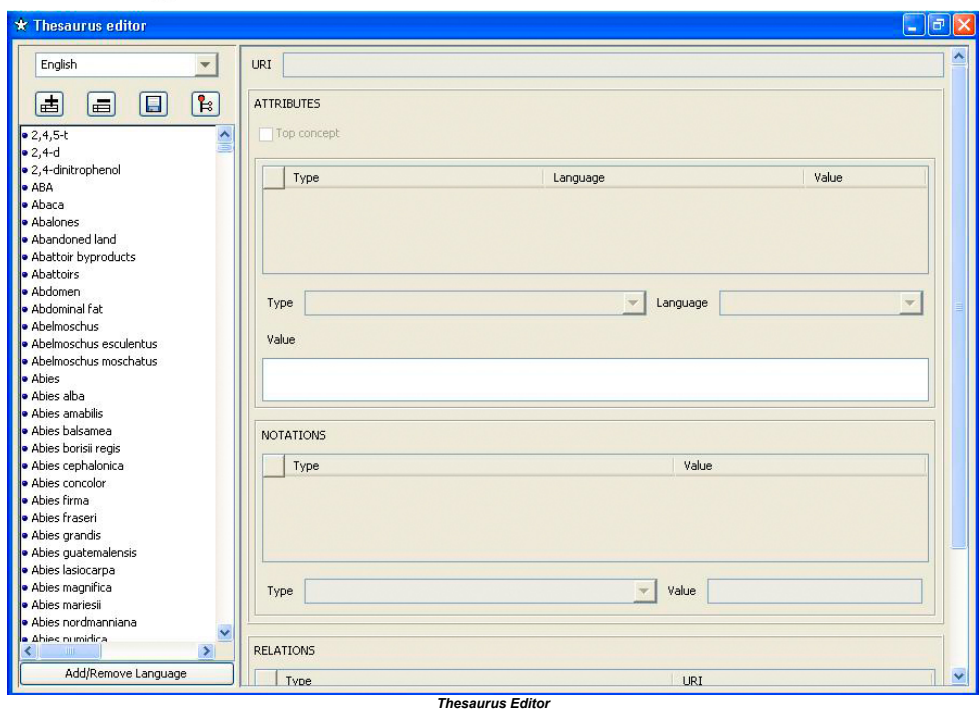
herramientas

- [Lo que enlaza aquí](#)
- [Cambios relacionados](#)
- [Páginas especiales](#)
- [Versión para imprimir](#)
- [Enlace permanente](#)
- [Información de la página](#)

ThManager Thesaurus Edition

Thesaurus Edition

When you select "Thesaurus Editor" in Menu File , the thesaurus editor windows will open as the interface shown in the following figure:



All thesaurus concepts are shown in the list at left, where you can select everyone to edit the information contained. This list is the same as mentioned in section Thesaurus Visualization.

To save changes press "save button" .

To preview the thesaurus hierarchy press "Preview hierarchy button" .

Editing concepts

Once a concept is selected you can edit several properties and relations. At the moment they are:

- Preferred label, alternative label, definition and scope note as multilingual properties.
- Broader and narrower relations to define a hierarchical structure of concepts.
- Defining concepts as top concepts to begin a semantic branch, or simply to attach concepts in a list.
- Defining one of latest proposals to define codes through the "notation" label of SKOS, defining codes labelled with and URI indicating the semantic origin of everyone. It's completely optional so you can leave it blank and no effect will it have.

To mark concepts as top concept simply tick the "Top concept" option.

There are three different parts editing the information, the first one allows you to introduce multilingual information, the second one allows you to introduce codes, and the last one allows you to introduce relations between concepts.

All of them are based on a table system that provides a simple method to create new records. This can be made by pressing the insert button or pressing over the last row . Once created, his edition can be made in one of the present elements in the same box, usually under the table. You can identify them by their labels matching with table headers. Before editing any of them you must select any row in the table. Most of the editable elements commit their value to the table when they lose the focus.

By pressing delete button or through the contextual menu shown in the following figure, you can drop any row, also being allowed multiple selections.



To relate concepts with other concepts you must use the concept URI, so to give facilities a concept selector is provided , which attach the URI corresponding to your selection. Moreover the possibility of a manual URI insertion is available.

Creating and deleting concepts and languages

To insert new concepts the internal window button must be used, likewise to delete concepts the next button must be used. Since a concept is identified by an URI, while inserting, a new window ask for the new URI; offering the probably patron to use if applicable.

To insert and delete languages the bottom shown in the following figure must be used, allowing the language edit window shown in last figure. On the left is the thesaurus language list and on the right are the languages available to insert. Through an intuitive pair of buttons you can switch every language from one to another.



Languages button



Add/Remove languages

There are some restrictions creating or deleting concepts and languages:

- You can only insert a new concept if there is any language.
- If you delete any language, all properties labelled with this language will be also deleted.
- If you delete the last one language, all concepts will be also deleted.

In any case, all restrictions will be advice on line.



navegación

- [Página principal](#)
- [Cambios recientes](#)
- [Página aleatoria](#)
- [Ayuda](#)

buscar

herramientas

- [Lo que enlaza aquí](#)
- [Cambios relacionados](#)
- [Páginas especiales](#)
- [Versión para imprimir](#)
- [Enlace permanente](#)
- [Información de la página](#)

ThManager Metadata Edition

Metadata Edition

Metadata editor

The lack of metadata descriptions make very difficult the identification of the thesauri provided by services.






Thus, in order to facilitate the description of thesauri, this tool incorporates a component for the edition of thesauri metadata. For that purpose a metadata profile based on Dublin Core has been created. The reason to use Dublin Core as basis of this profile has been because of its extensive use in the metadata community. It provides a simple way to describe a resource using very general metadata terms, which can be easily matched with complex domain-specific metadata standards. Additionally, Dublin Core can be also extended to define application profiles for specific types of resources.

When you select the option "metadata" in Menu File, the metadata edition window will open using the interface shown in the following figure. This window allows to visualize and also to edit the metadata of the record selected in the thesaurus record selection window. The interface in this window complies with the metadata elements included in the Dublin Core application profile for thesauri, more details in section 9.

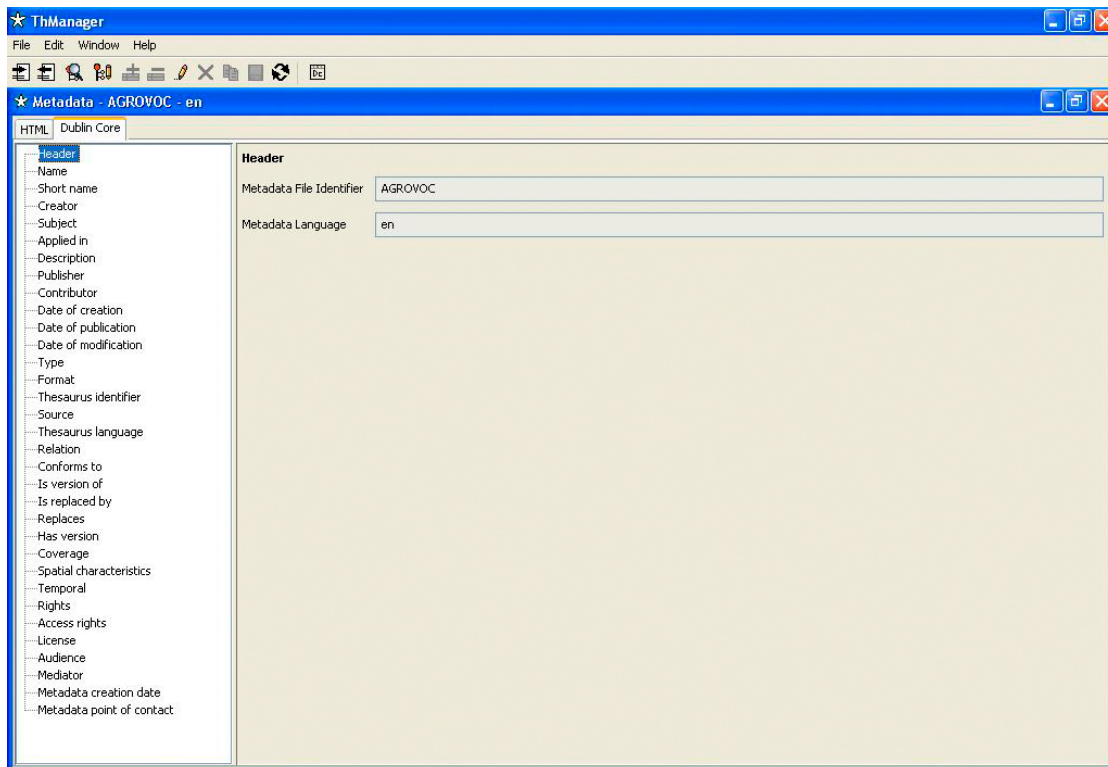
When you select a record in the metadata record selection window, its meta-information is automatically shown, and the edit option set enabled (if no record is selected, this option can not be used). On the metadata edit window title, you can see what record is being shown.



Edition Metadata Window

To modify the metadata, you should press on Edit button  that will enable options:  add,  delete (add or remove rows in a table that allows you edit metadata multiple elements),  save and  cancel (save or discard changes). Furthermore, it will lock the rest of the tool, to avoid that another record is selected while one is being modified.

Metadata edition panels behave similar to thesaurus edition panel described in section [Editing concepts](#) in reference to tables associated with graphic elements that allow you fill in the table information.



Edition Metadata Window

To make the metadata introduction as easier as possible, all confusing situations have been removed. So, when you are in edition mode, only the fields in which data can really be introduced are enabled; since, for example, if no row is selected in a table, fields related to this table will remain disabled and no modification will be allowed on them, until you select a row on which data will be saved.

Finally, let's underline that the metadata edition window provides access to the following tools to complete some metadata elements:

- Thesaurus concepts selection tool (see section [Thesaurus concepts selection tool](#)).
- Tools for geographic bounding box definition (see section [Tools for geographic bounding box definition](#)).



navegación

- [Página principal](#)
- [Cambios recientes](#)
- [Página aleatoria](#)
- [Ayuda](#)

buscar

herramientas

- [Lo que enlaza aquí](#)
- [Cambios relacionados](#)
- [Páginas especiales](#)
- [Versión para imprimir](#)
- [Enlace permanente](#)
- [Información de la página](#)

[página](#)
[discusión](#)
[ver código](#)
[historial](#)

ThManager Import/Export


Import/Export

Import

This tool allows you import thesaurus files in XML/RDF format and SKOS standard. By default it searches for files with ".skos.xml" extension, but you can introduce anyone else.

If a metadata is provided, it will be also imported. In other case it will create it automatically, because you don't need to use metadata technology. There are some restrictions about importing metadata:

- It must be in the same directory as SKOS file.
- Our extension for metadata is ".MD.DC.xml", but it can be different, having the same name as the SKOS file without extensions.
- The languages included in the metadata will be used as language filters while importing the thesaurus, what means that only will be imported the languages described in the metadata. If non-metadata is provided, it will discover the languages contained in the SKOS file among several languages.

The thesaurus records will be added to the internal tool repository. To load the new imported thesaurus is needed press refresh button .

Relate to WordNet concepts

This an option that allows you relate the thesaurus concepts with semantically near concepts in the lexical database WordNet in order to disambiguate thesauri for different purpose. This disambiguation can be seen in Thesaurus Viewer, and exported in a separated file.

Import window

Export

This tool allows you export the thesaurus selected in "Record Selection" window to RDF/XML format file in SKOS standard. The metadata will be also exported in a separated file, and if there is disambiguated info, it will be also exported in a separated file.

Export window

navegación

- [Página principal](#)
- [Cambios recientes](#)
- [Página aleatoria](#)
- [Ayuda](#)

buscar

herramientas

- [Lo que enlaza aquí](#)
- [Cambios relacionados](#)
- [Páginas especiales](#)
- [Versión para imprimir](#)
- [Enlace permanente](#)
- [Información de la página](#)

ThManager Tools

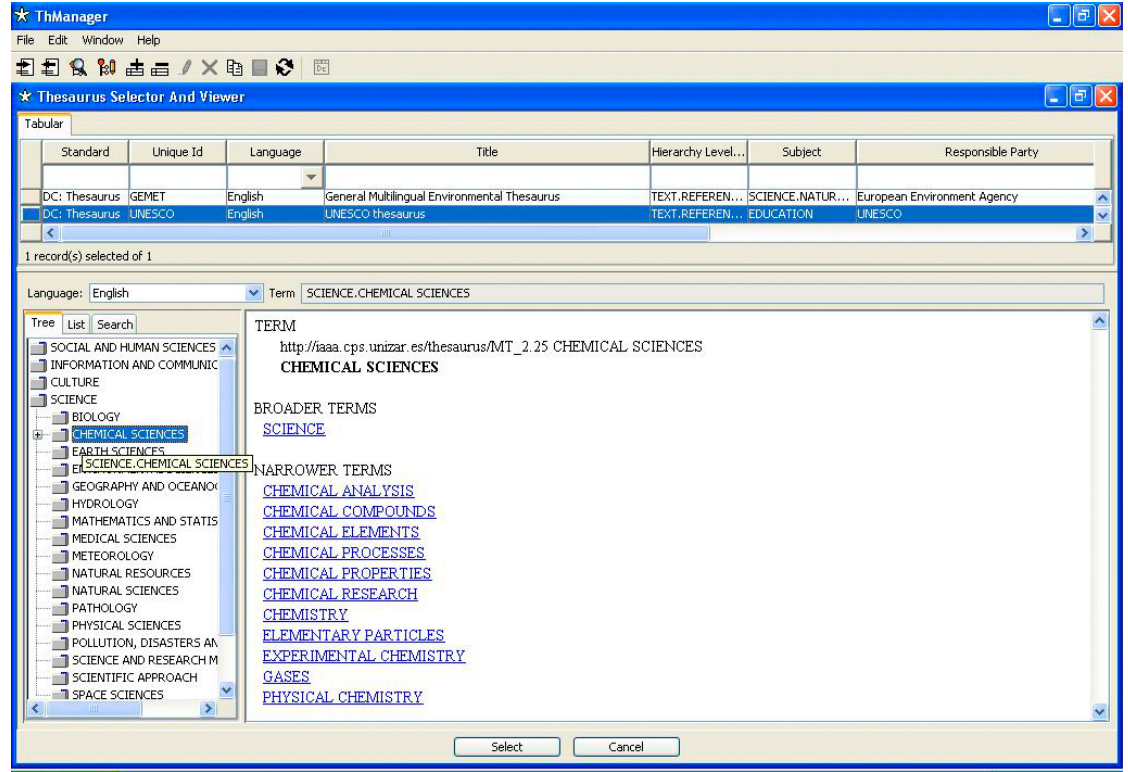
Tools

- Contenido** [ocultar]
- 1 Tools
 - 1.1 Thesaurus concepts selection tool
 - 1.2 Tools for geographic bounding box definition
 - 1.2.1 Coordinates conversion tool
 - 1.2.2 Coordinates selection tool

Thesaurus concepts selection tool

The purpose of this tool is to make it easier to introduce thesaurus concepts in the metadata edition window fields which values are useful to be thesaurus concepts, so they have a well-known set of values and it is easier to search in the a catalog.

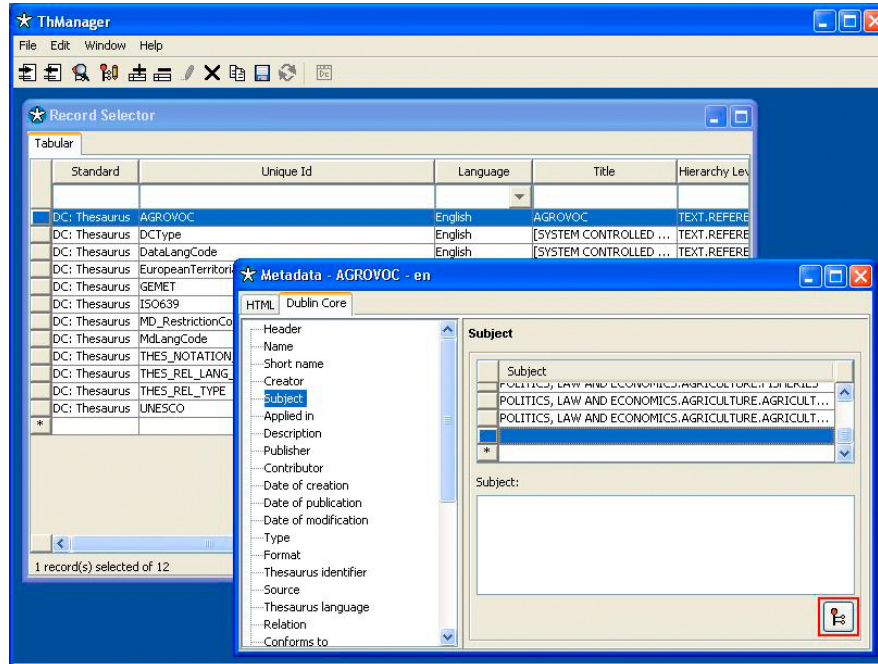
Through the interface shown in next figure, you can select among several thesauri available depending on the field you are editing. Different selections imply the load of the selected thesaurus in the integrated thesaurus viewer, which is the same to as described in section Thesaurus Visualization.



Thesaurus concepts selection window

This window will be accessible from those fields which allow the introduction of controlled values, through the "Search keywords" button (See next figure).

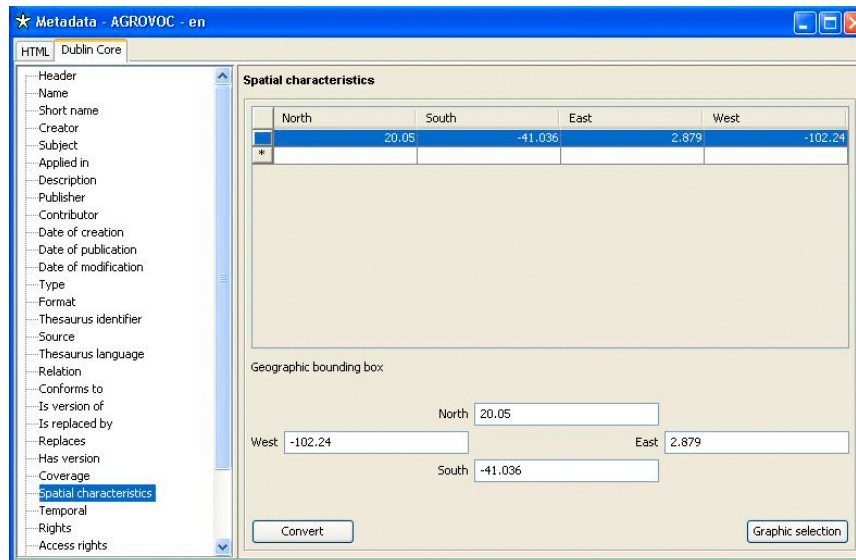
To introduce a concept in the right field on the metadata edition window, you have to select it in the concept selection window and press "select" button, and then, it will have been pasted in the metadata edition window. If "cancel" button is pressed, no selection will be made.



Keywords in the metadata edition

Tools for geographic bounding box definition

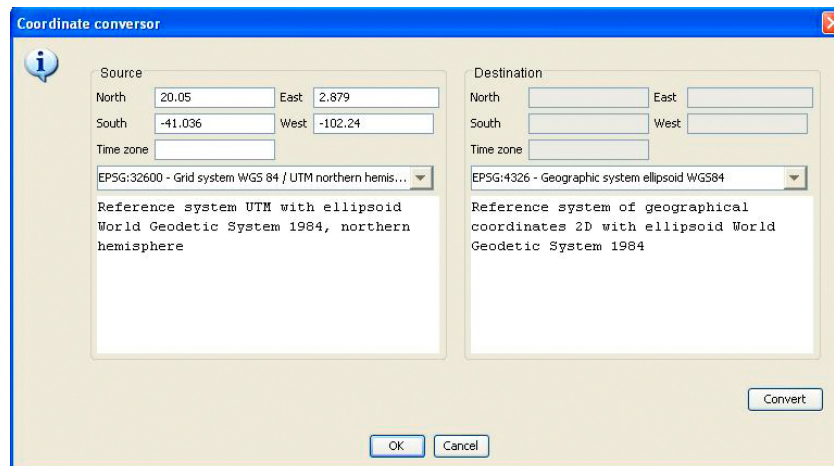
To select the geographic coordinates that define the bounding box from the metadata edition windows (see next figure), a couple of tools described below are provided.



"Geographic bounding box" edition

Coordinates conversion tool

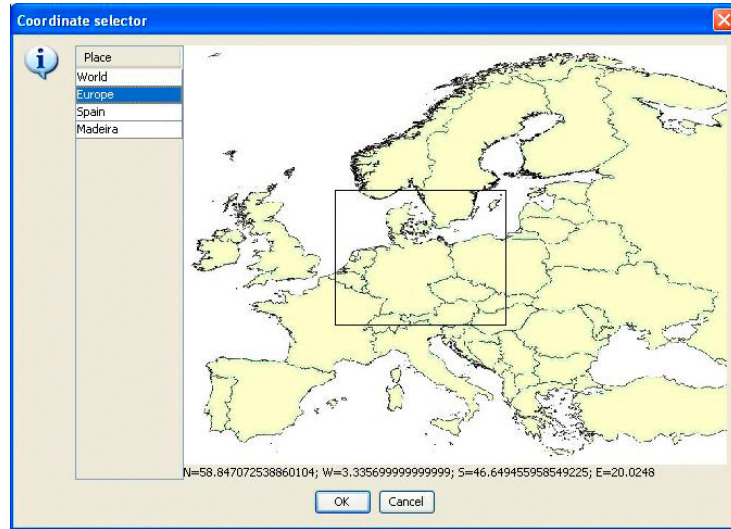
You can access this tool from "Convert" button when editing "Geographic bounding box" (see previous figure). Coordinates defining geographic bounding box must be geographic coordinates (longitude/latitude). So this tool allows you convert other reference system coordinates. The next figure shows the conversion tool looking, where you can configure source and destination coordinates reference systems (geographic coordinates, but choosing different kinds of ellipsoids).



Coordinates conversion tool

Coordinates selection tool

You can access this tool from "Graphic selection" button when editing "Geographic bounding box" (see this [figure](#)). The next figure shows the graphic selection tool looking, that allows you establish with the cursor the box or rectangle that, on the displayed map, defines the spatial extension of the geographic resource.



Coordinates graphic selection tool



navegación

- [Página principal](#)
- [Cambios recientes](#)
- [Página aleatoria](#)
- [Ayuda](#)

buscar

herramientas

- [Lo que enlaza aquí](#)
- [Cambios relacionados](#)
- [Páginas especiales](#)
- [Versión para imprimir](#)
- [Enlace permanente](#)
- [Información de la página](#)

[página](#) [discusión](#) [ver código](#) [historial](#)

ThManager Why to use metadata?

Why to use metadata?

- The lack of metadata descriptions make very difficult the identification of the thesauri provided by services, and so producing low reuses of them.
- So to facilitate the description of the thesaurus, a metadata technology is provided. For that purpose a metadata profile based on Dublin Core has been created. The reason to use Dublin Core as basis of this profile has been because of its extensive use in the metadata community. It provides a simple way to describe a resource using very general metadata terms, which can be easily matched with complex domain-specific metadata standards. Additionally, Dublin Core can be also extended to define application profiles for specific types of resources.